



F6F

Perfect Appearance Excellent Performance
精于静 精于动



Email: info@fmsmodel.com
Http: //www.fmsmodel.com

MADE IN CHINA



Please visit both our Facebook fanpage and our homepage for updated product information



Please read before operating this system!

We would like to thank you for purchasing an innovative new product, designed for the hobby enthusiast. The **F6F** incorporates the use of a Radio Transmitter, a speed controller, a electronic motor, and electronic servos to provide long time enjoyment and give the user an introduction into the excitement of R/C flight.

Main specification

SPECIFICATION

Wingspan : 1400mm/55.2 in
Length : 1110mm/43.7 in
Weight : 2200g/77.6oz
CG Position : 90mm
Battery : 14.8V Li-Po Battery
ESC : 50A
Motor : Outrunner Brushless Motor
Wing Area : 36.7dm²
Wing Load : 59.9g/dm²
RC System : 6 Channel, 8 Servos And 1 Brushless ESC



The airplane offers the following characteristics

High speed, high scale performance, and suitable for mediate or a above level modelers.

1



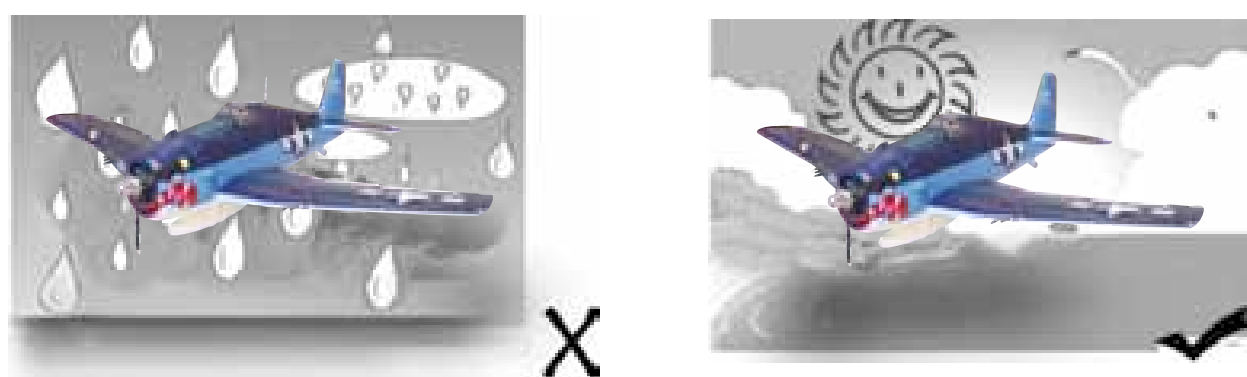
Statement

- This is not a toy. It is for experienced modelers only. You are responsible for the safe operation of this model and any damage or harm it may cause;
- Please adjust this plane according to instruction and make sure finger and other parts out of rotating parts of plane, or it may cause damage to the plane or injury.
- Users should follow all instructions properly and assemble the model correctly. It is your responsibility to insure the battery's charged correctly, following these instructions.

Safety precautions !

Please read this section until you fully understand!

- Do not fly in strong wind or bad weather

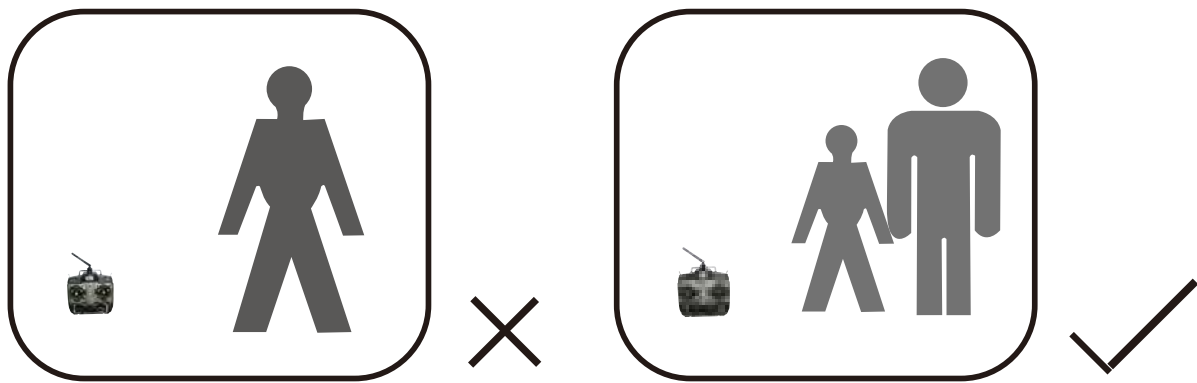


- Never fly the model in crowded areas, where there are lots of people, automobiles on the road or power lines overhead. Also do not fly around the airport. Please make yourself enough room for the flying and operating, as the plane can travel at high speed. Remember you are responsible for the safety of others.

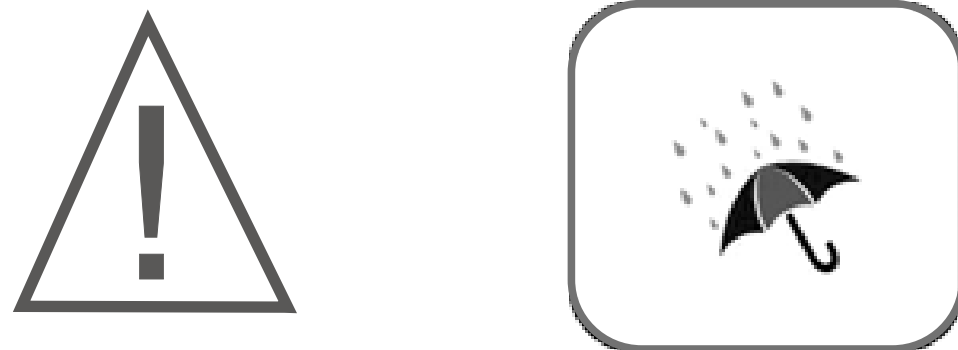
2



- Children under the age of 12 should have an adult guide. Never recommend for the children under the age of 14.



- Never leave the charger in wet conditions.



- The **F6F** is made from PA and polythene which are tinder. When it meets the heat, transfiguration can easily happen, so you must keep it away from heat.

3



- Do not attempt to catch the **F6F** while flying, please do not touch the propeller.



- Never leave this system unattended around children with battery in the unit, as injury may be caused due to children's turning on the transmitter or the plane.
- During the preparation for the flight, please remember to turn on the transmitter before connecting the battery pack.



- Close the throttle on the transmitter before connecting battery otherwise the motor may operate.



4



ASSEMBLY



- Assemble the propeller.

Screw-PM3.0X25(3PCS)



- Install the propeller.

11. Install the spinner.

12. Battery position.



- Install the canopy.

14. Install the antenna.

6



Notice!

Don't fly the airplane until one hour later after finishing assembly, as the glue may not function well.

Preparation before flight

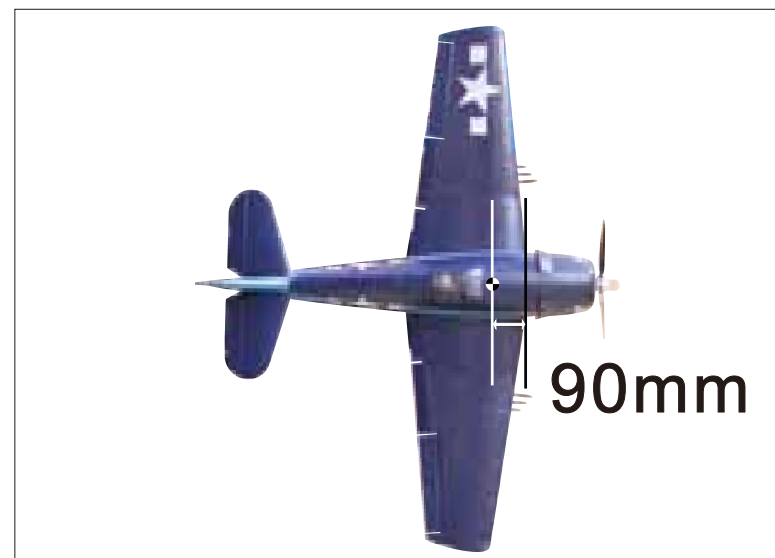


- Throttle in lowest level, the same with trim.



- Connect power battery, adjust the elevator and rudder.

CENTER OF GRAVITY (C.G.)



7



SPARE PART LIST

Fuselage	Main Wing Set	Elevator	Rudder
Oil Tank	Canopy	Linkage Rod	Brushless Motor
9g Digital Servo (For Flap)	17g Servo	9g Servo	Main Landing Gear Set
Brushless ESC	Battery	Screw Set	Sticker
Spinner	Propeller	Rear Landing Gear	Gun Barrel
Motor Mount	Cowl	Motor Shaft	Motor Board

Flight Preparation

Make sure that batteries in your transmitter are fresh and the antenna is extended all the way up. This will ensure full range for your aircraft. If you notice the plane is going to crash, cut throttle immediately. This will minimize damage.

8



Flight adjustment

- F6F** will fly better with fully-charged batteries.
- Keep flight straight: when you find it is difficult to fly straightly, please adjust the trim on the transmitter. For example, when you find **F6F** always fly leftward please push the trim on the transmitter inverse direction---right, as this will move the rudder to compensate.
- Keep flight horizontal: when you find it is difficult to fly **F6F** straightly, please adjust the trim on the transmitter. For example, when you find it always fly upward: please push the trim on the transmitter toward the top, as this will adjust the position of the elevator.

Flight attention

- Never fly in strong wind.
- Do not fly at any place where another same-frequency model is flying.
- Taking off:
Always take off toward the wind;
If you want to launch **F6F** by hands, maximize the power(including the micro adjustment)and run several meters to accelerate yourself, at last throw it horizontally.
If you want to launch **F6F** on the ground, maximize the power and let it accelerate, keep it running straightly, after it runs more than 60 feet, you can pull the elevator joy stick, and it will take off.
- Course: you need only 30% of the maximum power to keep **F6F** flying. It is a good idea to fly with power for a while and glide for a while .
In this way You can increase your maximum flight time and familiarize yourself with landing approaches.
- Landing: Before landing, switch off the power, fly toward the wind, and when **F6F** flies near to the ground, you may pull the elevator joystick and it will land gently. It really needs practice, although it sounds easy: it may be difficult for you until you do this many times.

9



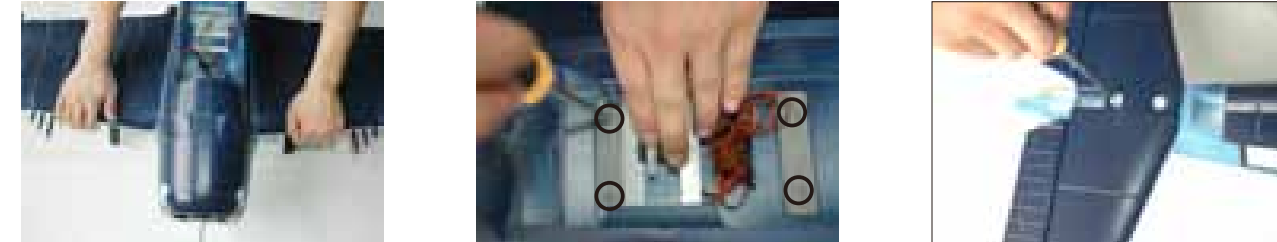
ASSEMBLY



- Install the gun barrel.

2. Install the airspeed head.

3. Install the main wing.

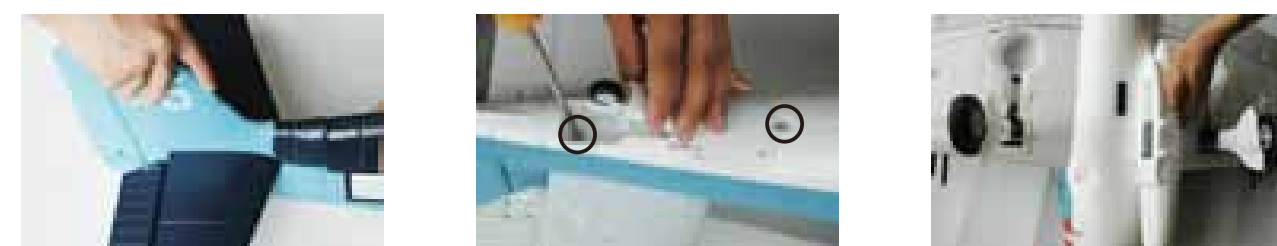


- Secure the main wing.

Screw-PM3.0*75(4PCS)

5. Install the elevator.

Screw-PA2.6X40(2PCS)



- Install the rudder.

7. Lower the retract before tightening the screws.

Screw-PA2.0X40(2PCS)

8. Install the Oil Tank.

5

